

# Term 2 Issue 2

## Bellevue School Newsletter

### Principal's Panui

Kia ora e te Whānau,  
Ngā mihi nui, ki a koutou katoa  
Warm greetings to you all.



As we move into the final weeks of the school term, we would like to share with you our focus on our school values of responsibility, resilience, respect, and resourcefulness. These values are integral to our school community, and we encourage you to support your children in embodying them both at school and at home. Here's how you can help nurture these values in everyday life:

### Responsibility

At School:

- Remind your child to take care of their belongings and school resources.
- Let them pack and unpack their bags.
- Can they walk to or into school themselves?

At Home:

- Give your child household jobs that are age-appropriate.
- Create a schedule to help them manage their time effectively.

### Resilience

At School:

- Support your child in facing challenges, whether it's a difficult piece of work or a social situation.
- Teach them that it's okay to make mistakes and learn from them.

At Home:

- Share stories of resilience from your own life or famous figures.
- Encourage to try again after setbacks and praise their efforts, not just the results.

### Respect

At School:

- Discuss the importance of treating teachers and peers with kindness.
- Reinforce the school's rules about inclusive and respectful behaviour.

At Home:

- Model respectful communication within the family.
- Teach them to appreciate different perspectives and cultures.

### Resourcefulness

At School:

- Promote problem-solving skills by asking them how they might approach a task or issue.
- Encourage creativity with their learning.

At Home:

- Provide opportunities for your child to figure things out on their own.
- Engage in activities that require thinking outside the box, like puzzles or DIY projects.

### Spotlight on Success

I was so proud to see and hear of groups of students who have been on recent trips outside school. These tamariki have displayed our four values and represented Bellevue School exceptionally well. A particular mention to The Rugby 5's Team, our student leaders who attended National Young Leaders Day, Chess tournament, East Cluster Cross Country and of course everyone who had a wonderful time at our school disco.

Thank you for your continued support in making our school a nurturing environment where these values can flourish. Together, we can help our children become responsible, resilient, respectful, and resourceful individuals.

Ngā manaakitanga  
Anna Meehan

---

Team Up with Mark Francis  
and Tremains. When your  
**property sells** I'll give  
Bellevue School \$500.\*

**TREMAINS**  
Real Estate

\*Terms and Conditions Apply – Talk to Mark today.

tremains.co.nz | Tremains Real Estate BOP Limited Licensed REAA 2008



**Mark Francis**

Sales Consultant

**M 027 554 6653**

mark.francis@tremains.co.nz





Bellevue's Annual

# Matariki Breakfast

Let's Celebrate the Māori New Year,  
strengthen our family ties  
and share a bit of kai.

School Hall  
Doors Open at 8am

**TĪTOKI** Monday, 24th June

**KAURI** Tuesday, 25th June

**TŌTARA** Wednesday, 26th June

**PŪRIRI** Thursday, 27th June

# Term 2 Dates to Remember

- Week 8   Tuesday 18 June   - Western BOP Cross Country  
              Thursday 20 June   - Pizza Lunch
- Week 9   All week                - Matariki Breakfasts  
              Friday 28 June        - Matariki - no school
- Week 10   Tuesday 2 July        - Whānau Connections  
   school finishes at 12:30pm  
              Wednesday 3 July   - whānau connections 3pm-5pm  
              Thursday 4 July       - Rākau Team Cultural Exchange  
              Friday 5 July            - End of Term 2

## Tupu Team

Ako Tākaro provides opportunities for students to explore curriculum learning and key competency development, in a fun, challenging, student-directed, authentic context. Here are some of the things our Tupu team tamariki got up to recently.



Pictures, paper, a variety of colours and writing implements, stapler etc were put out to encourage some literacy in our play. Our students became authors and illustrators. It was very popular, with the pictures being cut out and put into books, comics and newspapers.

**Book making**



The Kowhai Room love Big Books. We read the book "Monsters Lunch". We acted out the story one day which we thought was funny. We made monsters with paint and wrote stories. Aren't our monsters amazing!!!



## Ramp Making

Some of our tamariki started exploring with a variety of materials outside on the deck ramp to see what they could make. They created ramps but they soon discovered a problem with the cars going off the edges. This activity led to lots of problem solving and teamwork.



We have been learning what Migration is all about. To help us understand this concept, we created a huge aeroplane that took us all away to another country far away. We then explored different kinds of resources and created new homes and friendships.

## Migration



## Samoa Language Week

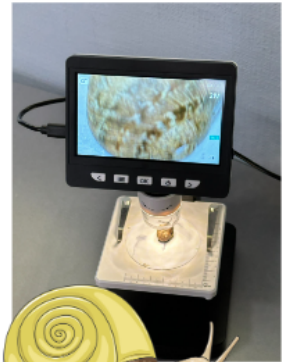
To celebrate Samoan Language week, Zara's Dad Aifai Esera came in to talk to us about Samoa and the Samoan culture. He brought instruments, traditional dress and necklaces and even demonstrated cracking a coconut!





## SNAILS!

This term, Room 11 have been interested in different creatures, like a green looper caterpillar which we kept safe when it turned into a cocoon then to a moth. This week, the children have been fascinated in snails! Thinking about what they eat, how they move, and researching what their different parts are. With the help of our resourceful Mr Janse, the children were able to look closer at the snails using the Montessori microscope. This then encouraged them to find other items from our natural world to study closer. I wonder what they'll find next?



## Helmetts

It is absolutely necessary that your child wears a helmet when biking or scootering to and from school.

# Drop Off & Pick Up



## PEDESTRIAN CROSSINGS



Our road patrollers are training and eager to help whānau cross the roads safely. Please cross Princess and Anne at the crossings before and after school. Anne road is not supervised before school.

## LATE ARRIVALS

If you arrive late to school, please sign your child in at the school office, or they can sign in independently.

## EARLY PICK UPS

If you need to pick up your tamariki early, please come to the office first. You need to sign them out and we will try to call the class for your tamariki to meet you there.



## END OF DAY MESSAGES

If you need to send a message to your tamariki about a change of pick-up plans please contact the office BEFORE 2PM. This will ensure your tamariki get the message on time.

## BEFORE AND AFTER SCHOOL SUPERVISION

Is the requirement of our parents/caregivers.

**Before school** - We only provide supervision at school from 8:30am. Our classes do not open for students until 8:30am and we have supervision on the field and pump track from 8:30am.

**After School** - If your child is walking or biking independently they are expected to go straight home. They must go on the walking school bus if they have to cross Queen or Windsor Roads. Where they don't have to cross roads then they are free to go as soon as the bell rings. If you are picking your child up from school, then please ensure you are here by 2:45pm. There is no supervision after 2:45pm except for the walking school bus or for crossing Queen and Anne Roads. Any child unsupervised at 3pm will be taken up to the office so they are safe until you get here.

If the above times do not work for your whānau then you will need to enrol in Playtime - our onsite before and after school care provider.

## New Entrant Cohort Entry Dates 2024

Bellevue School has adopted a cohort entry approach from Term 2, 2024. Cohort entry refers to new entrant children starting school as a group, at the beginning or mid-point of a term, AFTER THEIR FIFTH BIRTHDAY as opposed to starting school on their fifth birthday. Parents will continue to have the option of not starting their child in school until their 6th birthday.

Supporting students to have a great start at school is very important for their early success and something we value highly at Bellevue School.

Please note that the following information does not affect students who start in our Montessori Team at 6 Years old.

## Dates for 2024

Term	Start of term date	Mid-term date
2	29 April 2024	4 June 2024
3	22 July 2024	26 August 2024
4	14 October 2024	18 November 2024

---

## Current Policy Reviews

The policy review for parents this term is:

- **Employee Responsibility Policy**
- **Appointment Procedure**
- **Equal Employment Opportunities**
- **Teacher Relief Cover**
- **Safety Checking**
- **Police Vetting**
- **Classroom Release Time/Timetable**

1. Visit the website <https://bellevue.schooldocs.co.nz/1893.htm>
2. Enter the username (bellevue) and password (responsible).
3. Follow the link to the relevant policy as listed.
4. Read the policy.
5. Click the Policy Review button at the top right-hand corner of the page.
6. Select the reviewer type "Parent".
7. Enter your name (optional).
8. Submit your ratings and comments.
9. If you don't have internet access, school office staff can provide you with printed copies of the policy and a review form.

---

## Community Events and Notices

---

### Ōtūmoetai Social Supermarket

For those times when there are a lot of expenses.

If you need some help to just get through a week or 2 then you are exactly who this supermarket is for.

They can offer a grocery shop at minimal cost to help you out. You pay only \$20-\$50 depending on the size of your family but you do a full weekly shop.



Stacey

Also check out their website:

<https://www.foodstuffs.co.nz/our-brands/social-supermarkets/Otumoetai>

## HOW WELL IS YOUR CHILD TO ATTEND SCHOOL?

**MILD RESPIRATORY SYMPTOMS**

If a child tests negative for COVID-19 and they do not have any symptoms of concern it is okay for them to be at school if all of these apply.

- They do not have a fever and they do not need medicine to reduce a fever, like paracetamol or ibuprofen.
- They only have mild symptoms such as a mild cough, headache, or runny or blocked nose.
- They appear well - they are happy, eating and drinking normally, and can easily focus on learning.

**Hay Fever and Allergy Symptoms**

If your child has a history of hay fever or allergies and experiences their usual symptoms like sneezing, runny or stuffy nose, or coughing, they can still go to school. It's also okay if they sneeze due to changes in temperature or environmental factors like dust or sunlight.

**Non-Infectious Skin Problems**

Your child can attend school with non-infectious skin issues, such as:

- insect bites
- cuts
- scratches
- grazes
- eczema

These conditions are not contagious

**When An Unwell Child Should Stay Home**

Your child should stay home from school if:

- They've tested positive for COVID-19.
- They have a concerning symptom.
- They seem very unwell, upset, or unsettled.
- Public health or their doctor has advised them to stay home due to a contagious illness like measles.

If your child is experiencing anxiety at school, discuss with their parent or caregiver the best steps to manage it while ensuring they receive support to attend school.

**Symptoms of Concern**

If your child develops any of the following symptoms at school, contact their parent or caregiver for them to be picked up and cared for at home:

- Fever: Temperature higher than 38°C.
- Vomiting or diarrhea.
- School sores or other untreated sores.
- Sore throat requiring pain relief.
- New rash that could signal a serious illness.
- Wheezing or difficulty breathing.

Head lice (nits) is another issue to be aware of.

**attendance service**  
Tauranga Moana

**Flourish Drama Club**

ENROL TODAY FOR A FREE TRIAL

[www.flourishdrama.co.nz](http://www.flourishdrama.co.nz)

**PLAY TIME**  
AFTER SCHOOL CARE

**BELLEVUE SCHOOL**  
Situated in the Bellevue School hall  
2300 sessions available - open for Term  
2 ASD sessions available - close at 4pm

**BEFORE & AFTER SCHOOL CARE**

Download information brochure may book and can make their way to us  
More information is available at [www.playtime.co.nz](http://www.playtime.co.nz) - see also FAQs page

**What we offer...**

- Planned daily activities
- Playgroup and outdoor play
- Social groups
- Creative arts
- Attention to detail

Go to [www.playtime.co.nz](http://www.playtime.co.nz) and click on BELLEVUE SCHOOL

If you're registered with playPlus before, use your login credentials to join "Play Time Bellevue School" at the school

**Getting the most play out of each day!**

Play Time offers a fun, safe, structured, caring and respectful environment for children aged 5-12 years, where they feel valued and comfortable and are engaged in stimulating activities. It's the best time for your child to learn and grow.

The safety and well-being of the children in our care is of paramount importance to us.

Registration and enrolment information brochure available at the school

**PLAY TIME**  
AFTER SCHOOL CARE

**Before School Care**  
**After School Care**  
**Holiday Care**

**What we offer...**

Quality care for children aged 5-12 years, where they feel valued and comfortable and are engaged in stimulating activities. It's the best time for your child to learn and grow.

The safety and well-being of the children in our care is of paramount importance to us.

**Getting the most play out of each day!**

Play Time offers a fun, safe, structured, caring and respectful environment for children aged 5-12 years, where they feel valued and comfortable and are engaged in stimulating activities. It's the best time for your child to learn and grow.

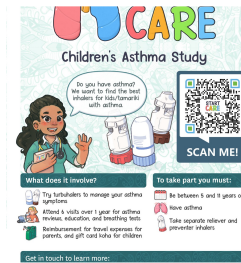
The safety and well-being of the children in our care is of paramount importance to us.

Registration and enrolment information brochure available at the school

Flourish Drama Club

## Play Time Before & After School Care

## Play Time Before & After School Care



## Keyboard Lessons





For more information on becoming a caregiver, please reach out:

☎ 0508 227 377

✉ caregiver\_enquiries@ot.govt.nz

🌐 ot.govt.nz/caregiving



Children all around New Zealand need everyday people like you.  
Open your heart and your home. Become a caregiver.



## Reporting absences

- Leave a message in the HERO app
- Give Stacey a call in the office - 07 576 5916
- Email Stacey in the office - [admin@bellevue.school.nz](mailto:admin@bellevue.school.nz)

***If your child is absent and the school has not been notified we will send you a text reminder.***

***Please can you reply to this text so we know your child is safe.***

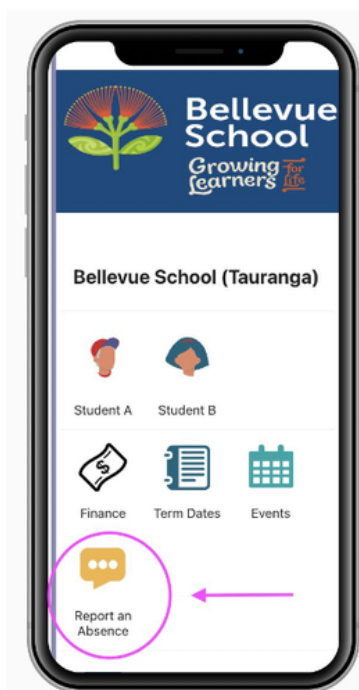
***Also please if you are late can you come to the office to sign in.***

## How to report an absence in Hero

If your child is going to be away from school due to sickness, an appointment or any other reason, please notify the school as soon as possible by using the Hero app.

### There is a 'Report an Absence' icon on the homepage of the app

1. Click on the 'Report an Absence' icon
2. Select the reason for the absence (add in any message if you need to)
3. Click 'Send message' and you're done!



## Can you help?

Our wonderful PTA are looking for some new members. Are you able to help? Have you got some time to support our tamariki? We would love to hear from you. Perhaps you are unable to commit to meetings but would like to help out and support some of our events. We would welcome any assistance you can give us. Ngā mihi nui.

Bellevue School is now  
**ZERO WASTE**

All rubbish that comes to school in lunchboxes will now be returned home

## Contact Us

Email: [admin@bellevue.school.nz](mailto:admin@bellevue.school.nz)

Website: <https://bellevue.school.nz>

Location: [20 Princess Road, Bellevue, Tauranga 3110, New Zealand](#)

Phone: +64 7 576 5916

Facebook: <https://www.facebook.com/bellevueschooltauranga/>



[Our Website](#)



**Bellevue School**

**Bellevue**