

Term 3 Issue 1

Bellevue School Newsletter

Principal's Panui

Kia ora e te Whānau,
Ngā mihi nui, ki a koutou katoa
Warm greetings to you all.

The New Curriculum

It's been an interesting couple of weeks in education with the announcement of a significant rethink of the timeframes for the launch and implementation of the new Maths Curriculum.



There were some achievement figures quoted by the Prime Minister that have been the subject of much discussion, especially with educators and educational researchers across New Zealand.

What we now know is that this achievement data was from an assessment of a small sample of NZ students in Year 3, 6 and 8 across the country against a number of questions which align to the new curriculum that has not been released. This use of data was disappointing and misleading and undermines the hard work and progress many schools are making.

At Bellevue School we are always striving to learn and to grow our professional capabilities. We absolutely support quality learning and teaching and a robust NZ curriculum and our team are committed to providing the best possible education for our tamariki.

We always aim to make considered changes and adopt new pedagogies when we believe they will lead to improvement and will best reflect the needs and aspirations of our ākonga, whānau and community.

Professional Learning for our Teachers

This year our teaching and support staff have undertaken some significant professional learning across the curriculum.

- We have all committed to upskilling ourselves in Te Reo Māori though Te Ahu o te Reo Māori.

- We have just finished learning about supporting the wellbeing of ourselves and our students through the Pause, Breathe, Smile programme.
- The schools across our Kāhui ako have been on a mathematical learning journey this year, and are committed to continuing this into 2025 and beyond.
- Many of our staff are currently training in structured literacy practices, with more staff training next year. The results of this professional learning should be seen first hand over the coming months.

We hope to see you at our whole school hui on Friday at 9am to celebrate all the wonderful learning that is happening for our tamariki.

Ngā manaakitanga
Anna Meehan

Team Up with Mark Francis
and Tremains. When your
property sells I'll give
Bellevue School \$500.*

TREMAINS
Real Estate

*Terms and Conditions Apply – Talk to Mark today.

tremains.co.nz | Tremains Real Estate BOP Limited Licensed REAA 2008



Mark Francis

Sales Consultant

M 027 554 6653

mark.francis@tremains.co.nz



evu

Term 3 Dates to Remember

Week 5	Friday 23 Aug	- East Cluster Winter Tournament
Week 6	Tuesday 27 Aug Thursday 29 Aug Thursday 29 Aug Friday 30 Aug	- Choir Festival - Montessori Birthday celebrations - PTA Sushi Day - Daffodil Day - dress up in yellow
Week 7	Wednesday 5 Sep	- Rākau team speech competition
Week 8	Thursday 12 Sep Thursday 12 Sep	- East Cluster Speeches - PTA Pie Day
Week 9	Tues - Fri Friday 20 Sep	- Scholastic Book Fair - Book Character Dress up day
Week 10	All week	- Kids Can Ride (Senior School)

Introducing...

Our new Sports Coordinator - Jo Dawson

Kia ora Bellevue Whanau,

My name is Jo and I am excited to be apart of your school in the sports coordinator role.

I am a mother to 5 wonderful children who are at College, Intermediate and Primary.

I am looking forward to creating some awesome sports teams and being apart of the growth of sport within Bellevue school.

sport@bellevue.school.nz



Our new Librarian - Gemma Grey

Kia ora,

I'm mum to Jai in room six, and also Miela who is 3 years old.

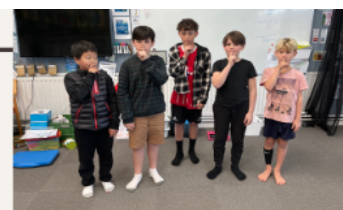
I love to read, walking in the bush or along the beach and camping where we have no cell service so we can all unplug.

I'm looking forward to showing the tamariki the magic of a great book.



Rākau Team

Whānau Tahi



For inquiry this term we have been exploring dance and music. Our most recent challenge was to create a tutting routine of at least 15 seconds. We had to explore the different moves and angles used, along with adding or creating some suitable music. Loads of fun and challenge.

**Tutting is a dance movement that originated back in the 1970's. It focuses on the geometric shapes our body can make - mostly 45 or 90 degrees. Tutting is based on the poses and gestures seen in ancient Egyptian art - especially King Tutankhamun and his tomb. That is why it's called Tutting - the name comes from King Tut.

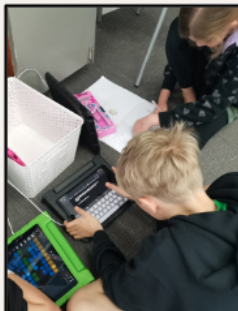


Whānau Rua



Our Inquiry topic, 'The power of Music and Dance' has inspired us in Whānau rua to choreograph tutting dance routines, create songs on GarageBand, practice our ukulele skills and experiment with instruments. We have been loving it!

Whānau Toru



Dance and Music are our major themes this term, from learning about music and different genres, to sharing our own experiences of it. Through our inquiry learning, we are pouring our efforts into finding our own ways to use music and dance as expression and creation!

For some, this has come in the form of learning how to write a song, for others, making a jingle, or music video, others still, using Garageband to make music, some a dance, some of us are even learning to play instruments via online videos. The exploration is varied and exciting! We hope to be able to share soon!

Rākau Whānau 2024!



Book Fair!



Our Bellevue School Book Fair week will be in Week 9 - Tuesday 17 September - Friday 20 September.

Scholastic Books will be onsite and displayed for you to purchase and we will have a Book Character dress up day on Friday 20th September! More info to come!

Current Policy Reviews

The policy review for parents this term is:

- **Media**
- **Professional Development**
- **Staff Conduct**
- **Staff Leave**

1. Visit the website <https://bellevue.schooldocs.co.nz/1893.htm>
2. Enter the username (bellevue) and password (responsible).
3. Follow the link to the relevant policy as listed.
4. Read the policy.
5. Click the Policy Review button at the top right-hand corner of the page.
6. Select the reviewer type "Parent".
7. Enter your name (optional).
8. Submit your ratings and comments.
9. If you don't have internet access, school office staff can provide you with printed copies of the policy and a review form.

Community Events and Notices

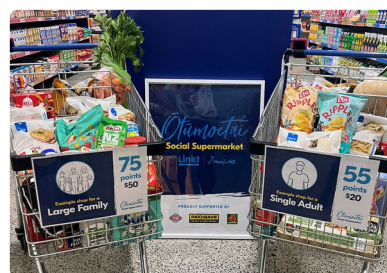
Ōtūmoetai Social Supermarket

For those times when there are a lot of expenses.

If you need some help to just get through a week or 2 then you are exactly who this supermarket is for.

They can offer a grocery shop at minimal cost to help you out.

You pay only \$20-\$50 depending on the size of your family but you do a full weekly shop.



Contact me at school and I can refer you. It's an easy process where I book you a time to go shop. I can even do it over the phone.

Stacey

Also check out their website:

<https://www.foodstuffs.co.nz/our-brands/social-supermarkets/Otumoetai>

HOW WELL IS YOUR CHILD TO ATTEND SCHOOL?

MILD RESPIRATORY SYMPTOMS

If a child tests negative for COVID-19 and they do not have any symptoms of concern it is okay for them to be at school if all of these apply.

- They do not have a fever and they do not need medicine to reduce a fever, like paracetamol or ibuprofen.
- They only have mild symptoms such as a mild cough, headache, or runny or blocked nose.
- They appear well - they are happy, eating and drinking normally, and can easily focus on learning.

Hay Fever and Allergy Symptoms

If your child has a history of hay fever or allergies and experiences their usual symptoms like sneezing, runny or stuffy nose, or coughing, they can still go to school. It's also okay if they sneeze due to changes in temperature or environmental factors like dust or sunlight.

Non-Infectious Skin Problems

Your child can attend school with non-infectious skin issues, such as:

- insect bites
- cuts
- scratches
- grazes
- eczema

These conditions are not contagious

When An Unwell Child Should Stay Home

Your child should stay home from school if:

- They've tested positive for COVID-19.
- They have a concerning symptom.
- They seem very unwell, upset, or unsettled.
- Public health or their doctor has advised them to stay home due to a contagious illness like measles.

If your child is experiencing anxiety at school, discuss with their parent or caregiver the best steps to manage it while ensuring they receive support to attend school.

Symptoms of Concern

If your child develops any of the following symptoms at school, contact their parent or caregiver for them to be picked up and care for at home:

- Fever: Temperature higher than 38°C.
- Vomiting or diarrhea.
- School sores or other untreated sores.
- Sore throat requiring pain relief.
- New rash that could signal a serious illness.
- Wheezing or difficulty breathing.

Head lice (nits) is another issue to be aware of.

attendance service
Tauranga Moana

Flourish Drama Club

ENROL TODAY FOR A FREE TRIAL

www.flourishdrama.co.nz

Flourish Drama Club

PLAY TIME BEFORE & AFTER SCHOOL CARE

located in the Bellevue School hall
2.30C sessions available - open from Tue
2.30C sessions available - close at 4pm

Before & After School Care

Children Intermediate children may book also and can make their way to us

More information is available at www.playtime.co.nz - see also FAQ's page

- Themed daily activities
- Playgroup and creative play
- Story and song
- Educational play
- Free snacks and

Go to www.playtime.co.nz to book and see any ENROL BOOK table

If you're registered with us before, see your name on our enrolment sheet

Play Time Before School Care is the answer

Getting the most play out of each day!

Play Time offers a fun, safe, structured, caring and respectful environment for children aged 5-13yrs, where they can learn and develop and are engaged in stimulating activities. It's their time for play!

The safety and well-being of the children in our care is of paramount importance to us.

Play Time Before & After School Care

PLAY TIME BEFORE & AFTER SCHOOL CARE

Before School Care
After School Care
Holiday Care

Why we are...

- Christchurch's largest play centre
- Long history of providing quality play experiences
- Fully licensed and managed for 10+ yrs
- Focused solely on Our Children's Care and Development (ECE, EFL, Holiday Programmes)
- Have a dedicated ECE team
- ECE team

What we offer...

- Safe play area with a range of activities to offer, plus other play choices
- Children are provided
- Playgroup and creative play
- Story and song
- Educational play
- Free snacks and

Go to www.playtime.co.nz to book and see any ENROL BOOK table

Getting the most play out of each day!

Play Time offers a fun, safe, structured, caring and respectful environment for children aged 5-13yrs, where they can learn and develop and are engaged in stimulating activities. It's their time for play!

The safety and well-being of the children in our care is of paramount importance to us.

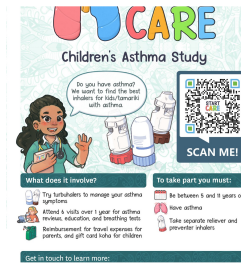
Play Time Before & After School Care



Music Lessons



Jiu Jitsu



Asthma Study



Look Sharp Store discount



Greerton Athletic Club



BMX Have a Go day



Rimu Fest



Reporting absences

- Leave a message in the HERO app
- Give Stacey a call in the office - 07 576 5916
- Email Stacey in the office - admin@bellevue.school.nz

If your child is absent and the school has not been notified we will send you a text reminder. Please can you reply to this text so we know your child is safe.

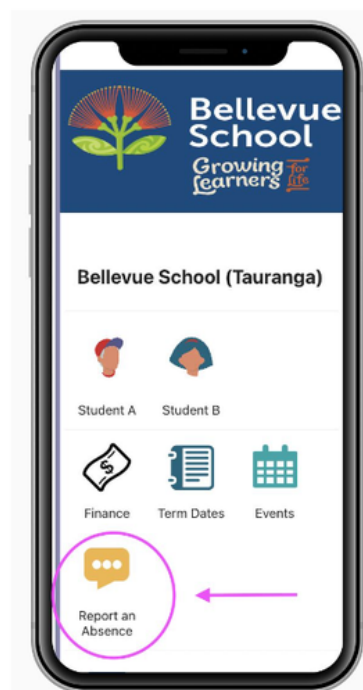
Also please if you are late can you come to the office to sign in.

How to report an absence in Hero

If your child is going to be away from school due to sickness, an appointment or any other reason, please notify the school as soon as possible by using the Hero app.

There is a 'Report an Absence' icon on the homepage of the app

1. Click on the 'Report an Absence' icon
2. Select the reason for the absence (add in any message if you need to)
3. Click 'Send message' and you're done!



Can you help?

Our wonderful PTA are looking for some new members. Are you able to help? Have you got some time to support our tamariki? We would love to hear from you. Perhaps you are unable to commit to meetings but would like to help out and support some of our events. We would welcome any assistance you can give us. Ngā mihi nui.

Bellevue School is now
ZERO WASTE

All rubbish that comes to school in lunchboxes will now be returned home

Contact Us

Email: admin@bellevue.school.nz

Website: <https://bellevue.school.nz>

Location: [20 Princess Road, Bellevue, Tauranga 3110, New Zealand](#)

Phone: +64 7 576 5916

Facebook: <https://www.facebook.com/bellevueschooltauranga/>



[Our Website](#)



Bellevue School

Bellevue