

# Term 2 Issue 1

Bellevue School Newsletter

## Principal's Panui

Kia ora e te Whānau,  
Ngā mihi nui, ki a koutou katoa  
Warm greetings to you all.



## Cross Country

It was so amazing to see so many of our tamariki positively participating in this event last week. The weather made us change our original times but we were lucky enough to get out there and have all races completed on the day. Whakamīharo ana - you are superb!

## Whānau Connection

On the **2nd and 3rd July** teachers will be available to meet with you and your child to celebrate and discuss your child's learning journey. These conferences are a celebration of the progress and achievement of your child and will focus on their achievements so far this year and their next steps for learning. School will be closed from 12:30pm on the afternoon of Tuesday 2nd July. Next week, we will send home information for you to book a time.

## Enrolment scheme

At the beginning of this term the MOE reinstated Bellevue School's enrolment scheme. There is no zone for our Montessori team, but there is specific criteria for entry. Please feel free to view our website for more information on zone areas for our mainstream classes and criteria for our Montessori classes.

## Pātaka kai

Thank you so much to everyone who is contributing to our pātaka kai (food pantry). There is always food, so please ensure that you also come and get what you need as this is a reciprocal initiative.

Please keep an eye out for our calendar, so that you know about upcoming dates of importance.







Team Up with Mark Francis  
and Tremains. When your  
**property sells** I'll give  
Bellevue School \$500.\*

**TREMAINS**  
Real Estate

\*Terms and Conditions Apply - Talk to Mark today.

tremains.co.nz | Tremains Real Estate BOP Limited Licensed REAA 2008

  
**MARK  
FRANCIS**

**Mark Francis**

Sales Consultant

**M 027 554 6653**

mark.francis@tremains.co.nz



evu

# Term 2 Dates to Remember

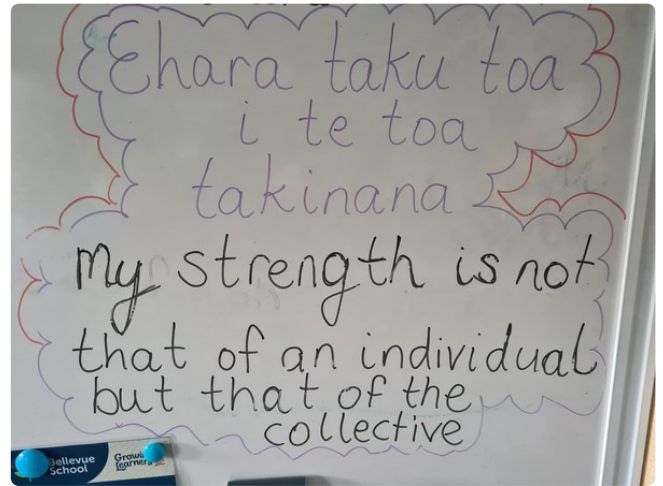
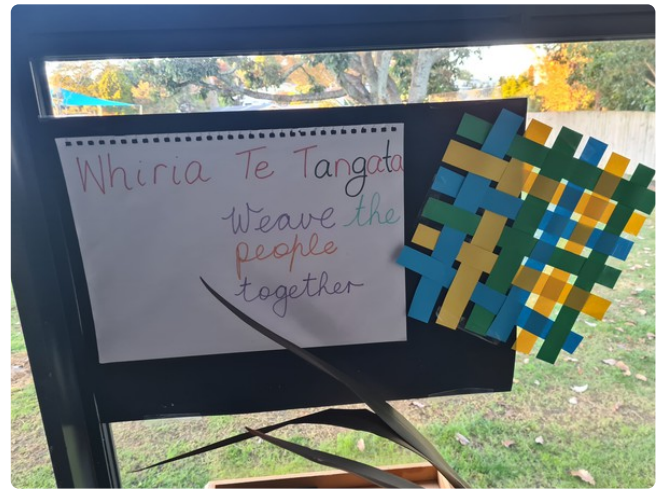
Week 4	Thursday 23 May	- Pie Lunch day
Week 5	Friday 31 May	- Teacher only day - no school
Week 6	Monday 3 June	- Kings birthday - no school
	Wednesday 5 June	- School Photo day
	Friday 7 June	- Donut day
Week 7	Wednesday 12 June	- School Disco
Week 8	Tuesday 18 June	- Western BOP Cross Country
	Thursday 20 June	- Pizza Lunch
Week 9	All week	- Matariki Breakfasts
	Friday 28 June	- Matariki - no school
Week 10	Tuesday 2 July	- Face to Face Conferences
	Thursday 4 July	- Rākau Team Cultural Exchange
	Friday 5 July	- End of Term 2

## Montessori

Montessori students have been enjoying weaving with a variety of genre. This culminated in some lovely Mother's Day presents.











## Te Pae Taumata - Connecting Mana Whenua with the leaders of our Kura

Recently, Kaumātua, Tumuaki (Principals) and school Cultural leaders from around Tauranga Moana met at Hangarau Marae in Bethlehem. It was a wonderful opportunity to hear the history from hau kainga and to continue to grow the relationships with Kaumātua and Iwi. Tauriko, Taumata and Ōtūmoetai Primary school Principal/DPs, shared their school journeys around building relationships with mana whenua. They were inspirational. It was exciting to see the benefits that have come from these hui and the strength of the bonds that have been forged.



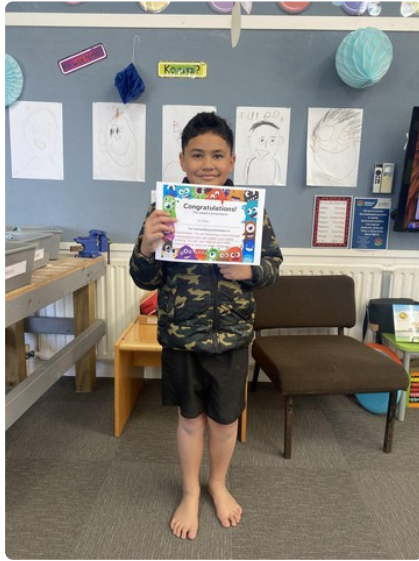
***"Inā aro atu ana te oranga ki ngā mea pai, ka rere te wairua, ka taea ngā mea koutou"***

If our lives and hearts are attuned to good things, the spirit flows freely, everything is possible  
- nā Takuta Maharai Winiata

Maths with Maree



Over the last 12 weeks we have been lucky enough to have the expertise of Maree, an amazing teacher of Maths. Maree has been employed to run some extra maths sessions for some of our tamariki. She has been amazing at making maths super engaging and fun for our students and also teaching some of our teachers.





## Travelling to and from school

To ensure a smooth start and to help our new families we have given some pointers below for navigating around our school. Bellevue School encourages active modes of transport to support a healthy lifestyle. Please remember to practise safe parking behaviour, obey the road rules, and choose safety over convenience.

- Pre-plan a meeting place with your children away from school to help reduce congestion. We do have many streets coming off and around the school that can access safe parking bays.
- Bike, walk, scooter to school to help reduce congestion, be fit and healthy.
- Use the designated safe school crossings on Anne Rd and Princess, even if you need to walk a little further.
- When School Road patrols are operating, please pay attention to their instructions.

A reminder -

- No parking on footpaths.
- No stopping or parking on yellow lines.
- Only enter the school driveway to park, do not enter the school driveway to pick up or drop off children.
- No double parking alongside other vehicles to pick up or drop off children.
- Park safely. Parking on grass verges can make it difficult for children to see and be seen.

The Bellevue School area will also be visited regularly by Travel Safe and TCC Parking to help maintain safety for all children using the area.

---

## ANZAC Game - Warriors vs Titans

In Auckland I ran the ball out for the Warriors ANZAC game and did the coin toss. It landed on heads. I went with my Mum, Dad and sister. When I ran the ball out, I got the ball out from a helicopter. I put the ball on the tee. It was so much fun that I did not want to leave.

By Harrison Devine

To see the video - click the link below:

<https://www.nrl.com/news/2024/04/25/warriors-v-titans--anzac-ceremony/>







---

## New Entrant Cohort Entry Dates 2024

Bellevue School has adopted a cohort entry approach from Term 2, 2024. Cohort entry refers to new entrant children starting school as a group, at the beginning or mid-point of a term, AFTER THEIR FIFTH BIRTHDAY as opposed to starting school on their fifth birthday. Parents will continue to have the option of not starting their child in school until their 6th birthday.

Supporting students to have a great start at school is very important for their early success and something we value highly at Bellevue School.

Please note that the following information does not affect students who start in our Montessori Team at 6 Years old.

### **Dates for 2024**

Term	Start of term date	Mid-term date
2	29 April 2024	4 June 2024
3	22 July 2024	26 August 2024
4	14 October 2024	18 November 2024

---

## Current Policy Reviews

The policy review for parents this term is:

- Employee Responsibility Policy
- Appointment Procedure
- Equal Employment Opportunities

- **Teacher Relief Cover**
- **Safety Checking**
- **Police Vetting**
- **Classroom Release Time/Timetable**

1. Visit the website <https://bellevue.schooldocs.co.nz/1893.htm>
2. Enter the username (bellevue) and password (responsible).
3. Follow the link to the relevant policy as listed.
4. Read the policy.
5. Click the Policy Review button at the top right-hand corner of the page.
6. Select the reviewer type "Parent".
7. Enter your name (optional).
8. Submit your ratings and comments.
9. If you don't have internet access, school office staff can provide you with printed copies of the policy and a review form.

---

## Wednesday Challenge - Gate Celebration

**We had a great afternoon celebrating all the different ways we can travel to and from school. Congratulations to our winners of the Gate Celebration!**





# WE'RE A WEDNESDAY CHALLENGE SCHOOL



## Community Events and Notices

### Ōtūmoetai Social Supermarket

For those times when there are a lot of expenses.  
If you need some help to just get through a week or 2 then you are exactly who this supermarket is for.  
They can offer a grocery shop at minimal cost to help you out.  
You pay only \$20-\$50 depending on the size of your family but you do a full weekly shop.



Contact me at school and I can refer you. It's an easy process where I book you a time to go shop.  
I can even do it over the phone.

Stacey

Also check out their website:

<https://www.foodstuffs.co.nz/our-brands/social-supermarkets/Otumoetai>

# Attendance Matters

A parents guide |  
he kaiarahi maatua



## Why attendance is important for our tamariki

Stay on track with learning.



Build strong relationships/  
Whanaungatanga.

Set up students up  
for their future.



Develop awareness of  
other cultures, religion,  
ethnicity, and gender  
differences.

Learning positive  
life skills.



Safe in the care of  
staff with access to  
support and  
resources.

## Make each Day Count

100% Attendance	0 Days Absent	Excellent
95% Attendance	9 days absence. 1 week and 4 days of learning missed	Satisfactory
90% Attendance	19 days absence. 3 weeks and 4 days of learning missed	Poor
85% Attendance	28 days absence. 5 weeks and 3 days of learning missed	Very Poor
80% Attendance	38 days absence. 7 weeks and 3 days of learning missed	Unacceptable
75% Attendance	46 days absent 9 weeks and 1 day of learning missed	Unacceptable

Regularly attending school helps students to get the most out of their education.



## The Law

Ākonga | students are legally required to attend school every day. Support is available for families of children who are struggling to attend.

- Parents play a big role in helping their child do well in school. You can do this by making sure your child goes to school every day and letting the school know if they're sick.
- Parents must make sure children are enrolled and attend school every day.
- Family holidays not acceptable reasons for being absent.
- Parents may be fined \$30 for every day a student is absent. If parents are found guilty for the first time, a fine of \$300 may occur; if parents are found guilty again, a charge of up to \$3000 may occur.

For more information visit:  
[communitylaw.org.nz](http://communitylaw.org.nz)



## Tips for parents

- Talk to your tamariki about why school is important, be positive about it and help them build good habits.
- Schools and kura should create a welcoming environment, and have clear rules about attendance and support local activities that promote going to school.
- We understand that families sometimes have problems, and that can make it hard to focus on school. But there is help available, just ask.
- Schools, parents and caregivers should work in partnership to support tamariki in regularly attending school. If your child is reluctant to go to school and you're having trouble, talk to your school.



## Getting help if your child is not attending regularly


We know there can be important reasons why children aren't coming to school, such as long-term illness, bullying or financial challenges for families. If your child is affected by any of these, talk to your school first.

We will work with you to remove barriers to attending. There are many kinds of support available that might help make it easier for students to come to school.

### Contact Us:

 [hwhareaitu@tgc.school.nz](mailto:hwhareaitu@tgc.school.nz)

 027 213 8298

 930 Cameron Road, Gate Pa, Tauranga 3112, New Zealand





## Flourish Drama Club

ENROL TODAY FOR A FREE TRIAL

[www.flourishdrama.co.nz](http://www.flourishdrama.co.nz)

## Flourish Drama Club



### BELLEVUE SCHOOL

located in the Bellevue School hall  
2 BSC sessions available - open from 7am  
2 ASC sessions available - close at 6pm

## BEFORE & AFTER SCHOOL CARE

Ōtūmoetai Intermediate children may book also and can make their way to us  
More information is available at [www.play-time.co.nz](http://www.play-time.co.nz) - see also FAQs page



- \* Planned daily activities
- \* Playground and outdoor play
- \* Small group
- \* Enthusiastic staff
- \* Afternoon tea

Go to [www.play-time.co.nz](http://www.play-time.co.nz) and click any ENROL/BOOK button.  
If you've registered with myPlus before, use your same username/password.  
Pick "Play Time Bellevue School" as the venue

▶ **Getting the most play out of each day!**

Play Time offers a fun, safe, structured, caring and respectful environment for children aged 5-13yrs, where they feel valued and comfortable and are engaged in stimulating activities. It's their time for play!  
The safety and well-being of the children in our care is of paramount importance to us.

Register and book online [www.play-time.co.nz](http://www.play-time.co.nz)

## Play Time Before & After School Care



Before School Care

After School Care

Holiday Care

**Who we are ...**  
Owners: Bruce & Thutia Solomon  
Local, family owned business, based in Tauranga  
Owner operated and managed for 10+ yrs  
Focused solely on Out of School Care and Recreation (BSC, ASC, Holiday) Programmes  
Hold MSD Level 3 SSAS accreditation  
OSCAR approved?

**What we offer ...**  
Staff: Child ratio 1:10  
Weekly activity planner with a range of activities on offer, plus other play choices  
Afternoon tea provided  
Homework supervision (not tutoring) if required  
Open on Teacher Only Days, Early School Close Days and Holiday Programme  
See more about Our Philosophy and Daily Routines: [www.play-time.co.nz](http://www.play-time.co.nz)

To Book:  
go to <https://play-time.aimyplus.com>  
or go to [www.play-time.co.nz](http://www.play-time.co.nz) and hit any ENROL/BOOK button

▶ **Getting the most play out of each day!**

Play Time offers a fun, safe, structured, caring and respectful environment for children aged 5-13yrs, where they feel valued and comfortable and are engaged in stimulating activities of their choice. It's their time for play!  
The safety and well-being of the children in our care is of paramount importance to us.

**Have Questions?**

## Play Time Before & After School Care



## MUSIQHUB

### Keyboard/Piano Lessons Available at school (limited spaces)

2024

For more info please visit [musiqhub-bop.co.nz/keyboard](http://musiqhub-bop.co.nz/keyboard) or scan the QR code



## Keyboard Lessons

## AVAILABLE!

ARE YOU READY TO START A NEW JOURNEY?

## JOIN NOW



**BEGINNER LEVEL PROGRAMME**

- Brazilian Jiu Jitsu (BJJ) classes will be held every Thursday lunchtime

**PRICE** \$50.00 / TERM

## CARE

### Children's Asthma Study

Do you have asthma? We want to find the best inhalers for kids/tamariki with asthma.



**SCAN ME!**

**What does it involve?**

- Try turbuhalers to manage your asthma symptoms
- Attend 6 visits over 1 year for asthma review, education, and breathing tests
- Reimbursement for travel expenses for parents, and gift card koha for children

**To take part you must:**

- Be between 5 and 11 years old
- Have asthma
- Take separate reliever and preventer inhalers

Get in touch to learn more:



## Baking Club

The most delicious after school activity there is!

- Suitable for students in Years 4-8 from any school.
- Each week you take home something delicious and learn new baking skills.
- Over the term we learn cake decorating skills that we'll apply to an epic end of term project.
- Make new friends who also love baking.
- Runs for 8 weeks each term from Heather's home studio in Gate Pa.
- Small groups of 4-6 students only
- Learn teamwork by working in small groups & problem solving.

Wednesdays 4-5:30pm  
\$45 a lesson- no extra costs.  
Places are strictly limited.

Learn more & book through the website or send me an email.  
Payment plans available.

[hello@bakewithme.co.nz](mailto:hello@bakewithme.co.nz)  
[www.bakewithme.co.nz](http://www.bakewithme.co.nz)  
[@bakewithme.co.nz](mailto:@bakewithme.co.nz)

Here's what 3 mums of children in Baking Club in 2023 had to say:

"Baking Club was so enjoyable for my daughter. She loved each week and learnt great new skills and recipes each week. Heather is so friendly and reliable. Highly recommend her classes!"

"My child thoroughly enjoyed her time at Baking Club during Term 2. She acquired new baking skills and created some delicious treats. I highly recommend it to parents with children interested in baking, or simply as a way to get the kids out of the house and exercising!"



## BestStart

Judea

We would LOVE your support.

With Winter coming in fast we would like to help your tamariki stay warm.  
These beanies can be personalised with your child's name so no more lost property.  
Great for home, weekends and at school.

The funds raised will go towards centre activities and experiences for the children



\$20

Fundraise

Scan me



## TRANSITION TO SCHOOL EXPO

ŌTŪMOETAI KĀHUI AKO

RTLB CORINNNE DEVITT

If you have a child starting school soon and want to know more about the schools in the Ōtūmoetai Kāhui Ako, more about the enrolment process or ideas about how to best support your child's transition to school, come along to our transition to school expo!

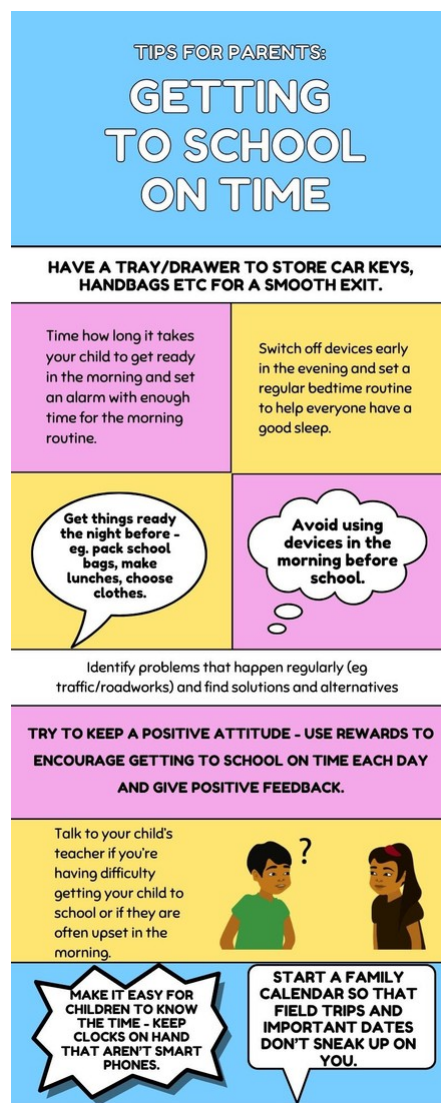
Keynote speaker: Resource Teacher of Learning and Behaviour CORINNNE DEVITT  
Corrinne is an experienced teacher, she is the passionate practice leader for the RTLB North Team and brings a wealth of knowledge about transition to school.

THURSDAY 13TH JUNE  
EVENT TIME: 6-7PM  
DOORS OPEN 5:30PM

241 ŌTŪMOETAI ROAD  
ŌTŪMOETAI BAPTIST CHURCH

A.ABOTT@OPS.SCHOOL.NZ  
HELEN.G@TKOM.SCHOOL.NZ





## Reporting absences

- Leave a message in the HERO app
- Give Stacey a call in the office - 07 576 5916

***If your child is absent and the school has not been notified we will send you a text reminder. Please can you reply to this text so we know your child is safe.***

***Also please if you are late can you come to the office to sign in.***

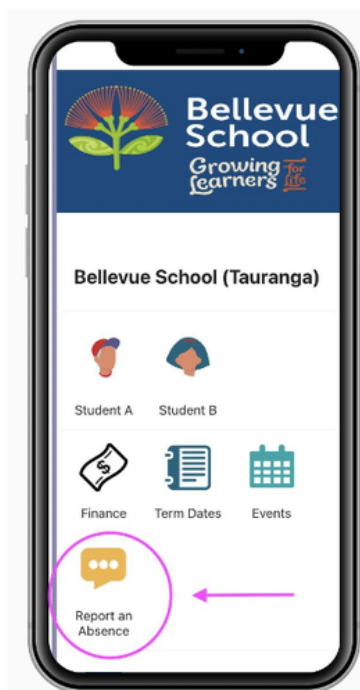


## How to report an absence in Hero

If your child is going to be away from school due to sickness, an appointment or any other reason, please notify the school as soon as possible by using the Hero app.

### There is a 'Report an Absence' icon on the homepage of the app

1. Click on the 'Report an Absence' icon
2. Select the reason for the absence (add in any message if you need to)
3. Click 'Send message' and you're done!



## Can you help?

Our wonderful PTA are looking for some new members. Are you able to help? Have you got some time to support our tamariki? We would love to hear from you. Perhaps you are unable to commit to meetings but would like to help out and support some of our events. We would welcome any assistance you can give us. Ngā mihi nui.

Bellevue School is now  
**ZERO WASTE**

All rubbish that comes to school in lunchboxes will now be returned home



### Contact Us

Email: [admin@bellevue.school.nz](mailto:admin@bellevue.school.nz)

Website: <https://bellevue.school.nz>

Location: [20 Princess Road, Bellevue, Tauranga 3110, New Zealand](#)

Phone: +64 7 576 5916

Facebook: <https://www.facebook.com/bellevueschooltauranga/>

## Our Website



Bellevue School

Bellevue