

# Newsletter Issue 2 Term 1

Bellevue School - Date

## Week 4

Kia ora e te Whānau,  
Ngā mihi nui, ki a koutou katoa  
Warm greetings to you all.

### Education Outside the Classroom

It's so great to see all the learning happening outside at the moment with the wonderful weather we have been having. We have had two major trips already with Rākau and Senior Montessori team visiting Huria Marae and Māhuri Team visiting Mauao. Tupu team are off to Kulim park in a couple of weeks.



### Lunch Time Clubs and Pump Track

Our lunch time clubs have got off to a great start this term with the following activities being offered and our tamariki absolutely loving the variety. Our staff are currently offering sports, bucket drumming/ukelele, dodgeball, library, sketching, choir and chill. Of course the pump track has been a real attraction and I have been so impressed with the way that our tamariki have been following the rules and looking out for each other - this has been a real life lesson in developing resilience, showing respect, being responsible and resourceful. If anyone is interested in running a lunch time club next term, please let the office know.

### Extra staffing this term

We have been fortunate enough to be able to provide some extra staffing this term to support some of our tamariki with their reading, writing and maths learning. Thank you to Maree Logan and Kelly Shilton. We have been able to provide bush club with Paul Evan's restoring the bush area behind the fence on the field. We have also employed Clare Lawrence to offer poolside swimming professional learning for our teachers.

### Travel Safe

Thank you for your assistance to keep our tamariki safe. The Travelsafe team from the council regularly visit our school to ensure compliance.

Please:

- SLOW DOWN
- Park legally (no yellow lines) as we can not see past you to cross the children safely
- Utilise the walking school bus
- Reduce congestion around school and park a short distance away
- Do not drive past the staff carpark sign in the school carpark
- Pedestrians use the carpark crossing and the pathway within the school grounds and don't walk through the carpark

Have a great week ahead.

Ngā manaakitanga

Anna Meehan

---

## House T-shirts

We are so excited to be able to give these t-shirts to our tamariki thanks to the amazing support of the Bellevue School Board.

Our tamariki will be encouraged to wear their house t-shirts to school every Friday, on school trips, for school events and on any other day of the week they feel like wearing it.

Replacement t-shirts are available to purchase from the school office. Please see Stacey if you wish to buy another house t-shirt for your child for \$25.



---

Team Up with Mark Francis and Tremains. When your **property sells** I'll give Bellevue School \$500.\*

**TREMAINS**  
Real Estate

\*Terms and Conditions Apply – Talk to Mark today.

tremains.co.nz | Tremains Real Estate BOP Limited Licensed REAA 2008

  
**MARK  
FRANCIS**

**Mark Francis**

Sales Consultant

**M 027 554 6653**

mark.francis@tremains.co.nz



Huria Marae



## Whānau Tahī

### Weaving with Mr Janse

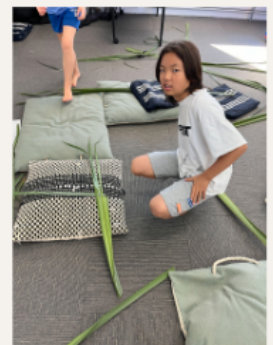
Room 1 were lucky enough to work  
On some beautiful paper weaving.

There were some amazing creations



That required a lot of perseverance.

Mrs Peter's brought in some harakeke from her garden, so we are now  
Trying our hand at raranga putiputi. We have been finding this medium  
quite challenging and having to show resilience and problem solving.



## Whānau Rua



Team work, makes the dream work!

In Whānau Rua we have been doing teamwork challenges. We have had to communicate, encourage, take risks and trust each other. It has been a wonderful way to strengthen our whānaungatanga.

## Whānau Toru



Digital Citizens!

This term, in order to prove we're ready for digital learning, we have been working hard in class to understand what it means to be a responsible digital citizen. In these pictures you can see us enacting different skits showing what we should and should not do when something goes wrong online. Some terrific acting!

Rākau Whānau 2024!



---

## Professional Development for 2024

### Te Ahu o te Reo Māori

This year, our staff are committed to enhancing our knowledge of te reo Māori and te ao Māori, through participating in the Te Ahu o te Reo Māori programme.

This programme provides the opportunity to learn and use te reo Māori all while supporting our tamariki. Te Ahu o te Reo Māori is open to staff, our school whānau, and anyone that has an interest in supporting our school. It is tailored to our local region with local knowledge and reo Māori expertise. We welcome our school whānau to join us on this learning journey. For more information click on the link - [Te Ahu o te Reo Māori](#)

To express your interest, please contact Anna Meehan - [ameehan@bellevue.school.nz](mailto:ameehan@bellevue.school.nz)

---

## New Entrant Cohort Entry Dates 2024

Bellevue School will be proceeding with cohort entry from Term 2, 2024. Cohort entry refers to new entrant children starting school as a group, at the beginning or mid-point of a term, AFTER THEIR FIFTH BIRTHDAY as opposed to starting school on their fifth birthday. Parents will continue to have the option of not starting their child in school until their 6th birthday.

Supporting students to have a great start at school is very important for their early success and something we value highly at Bellevue School.

Please note that the following information does not affect students who start in our Montessori Team at 6 Years old.

## Dates for 2024

Term	Start of term date	Mid-term date
2	29 April 2024	4 June 2024
3	22 July 2024	26 August 2024
4	14 October 2024	18 November 2024

---

## Current Policy Reviews

The policy review for parents this term is:

- **Parent Involvement**
- **Communicating with Parents**
- **Community Conduct Expectations**
- **School Planning and Reporting**
- **Reporting to Parents on Student Progress and Achievement**

1. Visit the website <https://bellevue.schooldocs.co.nz/1893.htm>
2. Enter the username (bellevue) and password (responsible).
3. Follow the link to the relevant policy as listed.
4. Read the policy.
5. Click the Policy Review button at the top right-hand corner of the page.
6. Select the reviewer type "Parent".
7. Enter your name (optional).
8. Submit your ratings and comments.
9. If you don't have internet access, school office staff can provide you with printed copies of the policy and a review form.

---

## Wednesday Challenge

### How the challenge works:

Get your students travelling to and from school differently on a Wednesday. Encourage them to bike, walk, scooter, skateboard, take a bus or run with friends, instead of jumping in a car with their parents or caregivers.

**WE'RE A**  
**WEDNESDAY CHALLENGE**  
**SCHOOL**



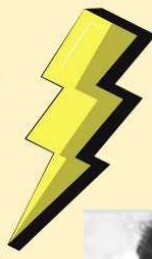
---

Community Events and Notices

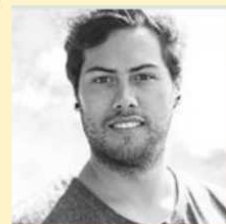
---



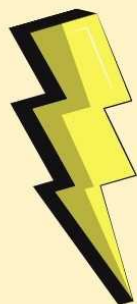
**Have a Go!**



**Guitar and Ukulele lessons  
Term 1 - at school on  
Wednesdays**



Wheriko Tamihana - Tutor



**For more info, go here, or scan the QR code**

**[www.musiqhub-bop.co.nz/info](http://www.musiqhub-bop.co.nz/info)  
[info@musiqhub-bop.co.nz](mailto:info@musiqhub-bop.co.nz)**





---

## Free data to access our school website on your mobile.

Browse school websites free via Zero Data portal

You can access our schools websites on your mobile devices without being charged for data, the multi-agency Zero Data initiative has added over 2,000 kura and school websites to the updated Zero Data portal. Now you can access important updates from our school, regardless of whether you have data credit or not.

To learn more information about this initiative, visit:

[Zero Data Portal – New Zealand Government](#)

---

## Ōtūmoetai Social Supermarket

For those times when there are a lot of expenses.

If you need some help to just get through a week or 2 then you are exactly who this supermarket is for. They can offer a grocery shop at minimal cost to help you out. You pay only \$20-\$50 depending on the size of your family but you do a full weekly shop.



Contact me at school and I can refer you. It's an easy process where I book you a time to go shop. I can even do it over the phone.

Stacey

Also check out their website:

<https://www.foodstuffs.co.nz/our-brands/social-supermarkets/Otumoetai>

**Flourish Drama Club**  
ENROL TODAY FOR A FREE TRIAL  
[www.flourishdrama.co.nz](http://www.flourishdrama.co.nz)

## Flourish Drama Club

**PLAY TIME** OSCAR PROGRAMMES AFTER SCHOOL AND HOLIDAY FUN  
**BELLEVUE SCHOOL**  
located in the Bellevue School hall  
2 BSC sessions available - open from 7am  
2 ASC sessions available - close at 6pm

**BEFORE & AFTER SCHOOL CARE**  
Otumoetai Intermediate children may book also and can make their way to us  
More information is available at [www.play-time.co.nz](http://www.play-time.co.nz) - see also FAQs page

- \* Planned daily activities
- \* Playground and outdoor play
- \* Small group
- \* Enthusiastic staff
- \* Afternoon tea

Go to [www.play-time.co.nz](http://www.play-time.co.nz) and click any ENROLBOOK button.  
If you've registered with amyPlus before, use your same username/password.  
Pick 'Play Time Bellevue School' as the venue

▶ **Getting the most play out of each day!**  
Play Time offers a fun, safe, structured, caring and respectful environment for children aged 5-13yrs, where they feel valued and comfortable and are engaged in stimulating activities. It's their time for play!  
The safety and well-being of the children in our care is of paramount importance to us.

## Play Time Before & After School Care

**PLAY TIME** OSCAR PROGRAMMES AFTER SCHOOL AND HOLIDAY FUN  
Before School Care After School Care Holiday Care

**Who we are ...**  
Owners: Bruce & Thuria Solomon  
Local, family owned business, based in Tauranga  
Owner operated and managed for 10+ yrs  
Focused solely on Out of School Care and Recreation (BSC, ASC, Holiday) Programmes  
Hold MSD Level 3 SSAS accreditation  
"OSCAR approved"

**What we offer ...**  
Staff:Child ratio 1:10  
Weekly activity planner with a range of activities on offer, plus other play choices  
Afternoon tea provided  
Homework supervision (not tutoring) if required  
Open on Teacher Only Days, Early School Close Days and Holiday Programme  
See more about Our Philosophy and Daily Routines: [www.play-time.co.nz](http://www.play-time.co.nz)

To Book:  
go to <https://play-time.aimyplus.com>  
or go to [www.play-time.co.nz](http://www.play-time.co.nz) and hit any ENROLBOOK button

▶ **Getting the most play out of each day!**  
Play Time offers a fun, safe, structured, caring and respectful environment for children aged 5-13yrs, where they feel valued and comfortable and are engaged in stimulating activities of their choice. It's their time for play!  
The safety and well-being of the children in our care is of paramount importance to us.

Have Questions?

## Play Time Before & After School Care

**Tauranga Sailing School**  
CALL 07 342 276 278 | EMAIL [tauranga@tauranga.sailing.school.org.nz](mailto:tauranga@tauranga.sailing.school.org.nz)

**Have A Go Sailing!**  
We make it so easy for you to enjoy the opportunity to grab sailing gear for one or two weeks. Drop in school holidays and throughout the school term.  
Starting From \$70

**LEARN TO SAIL PINK!**  
It's time to get your feet wet in the water and learn to sail. Our courses are designed to teach children the basics of sailing. There will be lots of fun and plenty of adventures including team group and individual sailing.  
Courses Starting From \$320

**BOOK YOUR SPOT FOR A SUMMER ADVENTURE!**  
COME AND JOIN IN ON THE FUN UNDER THE SUN!

## Tauranga Sailing School

**Fun & Educational CODING LESSONS**

Learn to code with expert tutors.  
Gain the ability to create with technology (instead of just consuming it).  
All skill levels welcome.

Grab a free trial lesson at [codingnz.com](http://codingnz.com)

Ages 9 to 11, 12 & 13, 14 to 16

## Coding NZ

**JOIN OUR PERFORMING ARTS CLASSES !**  
WEDNESDAY  
ELIZABETH STREET COMMUNITY & ARTS CENTRE  
3:30-4:30PM JUNIOR (5-8YRS)  
4:30-5:30PM INTERMEDIATE (9-12YRS)  
5:30-6:30PM SENIOR (13-18YRS)  
STILL NOT SURE? COME ALONG FOR A FREE TRIAL!

## Performing Arts

*Introduction to ponies classes*  
**at THE ONE AND A HALF ACRE WOOD in Whakamarama**  
**\$30 PER SESSION PER KID**  
**AGES 5 TO 14 YEARS**  
**4-6PM**  
**MONDAYS, WEDNESDAYS OR FRIDAYS**

**LEARN:**

- to catch, halter, and lead a pony
- basic riding skills
- to groom, brush, put on covers and tack
- what and how to feed
- Safe manner with horses
- Groundwork and basic bodywork

## Pony Classes

**SUMMER JAM** YOUTHTOWN  
**FAMILY FUN DAY!**  
**Saturday 10th February 2024**  
**9am - 3:30pm**  
**Welcome Bay School - 309 Welcome Bay Road, Tauranga**

Gather the whole whānau and join the fun this Saturday!

**CHILL ZONE & CHALLENGES | PHOTOBOOTH | MINI RENEGADE HOCKEY | FOOTSTEPS | PRIZES! FOOD & COFFEE & MORE!**

[www.youthtown.org.nz/summerjam](http://www.youthtown.org.nz/summerjam)


**BASKETBALL** New Zealand  
**BIRLS GOT GAME**  
**3X3 COMP GRADES:** U13, U15, U17, OPEN MALE & FEMALE, SOCIAL AND COMPETITIVE GRADES  
**3x3 entry only \$25 per**

## Youthtown Summer Jam Event

**BOUNDARIES, TECHNOLOGY, AND PARENTING**

Seminar on children and adolescents with renowned Prof. Ian Lambie

Join us as distinguished Prof. of clinical psychology Dr. Ian Lambie cuts through the noise of endless parenting advice to discuss boundaries, attachment, technology use and parental growth.



**7 MARCH 2024**  
**7-9PM**  
**Lifeforce Church Tauranga**  
**\$50 (early bird)**  
**[www.humanitix.com](http://www.humanitix.com)**

Fundraising event for professionals and parents!

Info: [admin@lifeaplenty.nz](mailto:admin@lifeaplenty.nz)



## Parenting Seminar

**Tauranga Sports Junior Rugby REGISTRATION MUSTER DAYS**

**REGISTRATIONS ARE NOW OPEN!**

Returning players, check your emails for the "magic link" to re-register  
 New players, click the link to complete a registration form

**MUSTER DAYS AT THE DOMAIN IN THE CLUBROOMS**  
 Sunday 10 March - 3.30pm - 6.00pm  
 Wednesday 13 March - 5.30pm - 7.00pm  
 All tackle grades (U8 - U13) MUST attend a muster day

- Please allow time for weigh in
- Rippa - if your child is playing rippa, they do not need to attend
- Please ensure you read all the information on the registration form
- Please ensure you complete all boxes on the registration form



## Tauranga Sports Junior Rugby

**Tauranga Sports Junior Rugby BOOT SWAP**

Do you have an old pair of rugby boots lying around that your kids have grown out of but still have heaps of playing life left in them? Do the kids need a new pair?

Bring them along to our muster days and donate them our boot swap. You can swap for a new-old pair or if you have nothing to swap, we can sell them to you for \$5.00

Please note, boots must be in good second hand condition. This can only work if we get buy in from you!




## Tauranga Sports Boot Swap

**RISE DANCE COMPANY**



**YOU HAVE THE POWER!!**  
**TO GET BEFORE SCHOOL OR LUNCH TIME CLASSES AT**

## Rise Dance Company

**MUSIQHUB**



**Keyboard/Piano Lessons Available**  
at school (limited spaces)

**2024**

For more info please visit  
musiqhub-bop.co.nz/keyboard  
or scan the QR code



## Keyboard Lessons

Pedal for a cause!

Rotary Club of Tauranga Sunrise

# THE GREAT K VALLEY CYCLE ADVENTURE

**FAMILY FRIENDLY. SCAVENGER HUNT BY BIKE**

**Sunday 21 April 2024**  
**10.00am - 2.00pm**  
**Kopureurea Valley Reserve**  
**17th Ave**



We invite you to join us for an action packed scavenger hunt by bike. Get your team together and register today.

The adventure will get kids and adults active while enjoying map reading, team building and puzzle solving.

Brought to you by the Rotary Club of Tauranga Sunrise in association with Bike Month.

Proceeds raised will go to the Graeme Dingle Foundation Bay of Plenty. Supporting local kids with values and life skills programmes. Plus other local youth projects.



f thegreatvalleycycleadventure

**REGISTER TODAY AT -**  
[www.eventspronto.co.nz/event7032](http://www.eventspronto.co.nz/event7032)

## The Great K Valley Cycle Adventure

**TIPS FOR PARENTS:**

# GETTING TO SCHOOL ON TIME


**HAVE A TRAY/DRAWER TO STORE CAR KEYS, HANDBAGS ETC FOR A SMOOTH EXIT.**

Time how long it takes your child to get ready in the morning and set an alarm with enough time for the morning routine.	Switch off devices early in the evening and set a regular bedtime routine to help everyone have a good sleep.
Get things ready the night before - eg. pack school bags, make lunches, choose clothes.	Avoid using devices in the morning before school.

Identify problems that happen regularly (eg traffic/roadworks) and find solutions and alternatives

**TRY TO KEEP A POSITIVE ATTITUDE - USE REWARDS TO ENCOURAGE GETTING TO SCHOOL ON TIME EACH DAY AND GIVE POSITIVE FEEDBACK.**

Talk to your child's teacher if you're having difficulty getting your child to school or if they are often upset in the morning.



MAKE IT EASY FOR CHILDREN TO KNOW THE TIME - KEEP CLOCKS ON HAND THAT AREN'T SMART PHONES.	START A FAMILY CALENDAR SO THAT FIELD TRIPS AND IMPORTANT DATES DON'T SNEAK UP ON YOU.
--	--

## Reporting absences

- Leave a message in the HERO app

- Send a text message to 027 379 6136

*If your child is absent and the school has not been notified we will send you a text reminder. Please can you reply to this text so we know your child is safe.*

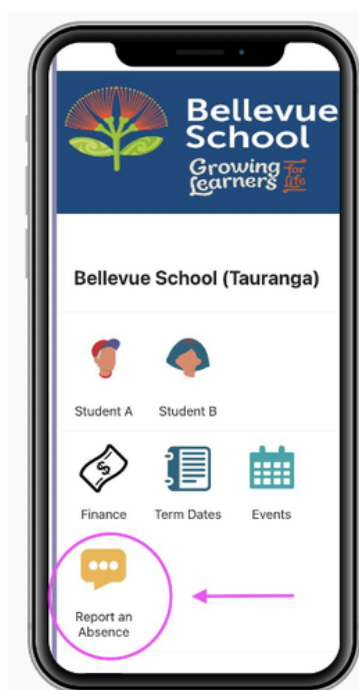
*Also please if you are late can you come to the office to sign in.*

## How to report an absence in Hero

If your child is going to be away from school due to sickness, an appointment or any other reason, please notify the school as soon as possible by using the Hero app.

### There is a 'Report an Absence' icon on the homepage of the app

1. Click on the 'Report an Absence' icon
2. Select the reason for the absence (add in any message if you need to)
3. Click 'Send message' and you're done!



## Can you help?

Our wonderful PTA are looking for some new members. Are you able to help? Have you got some time to support our tamariki? We would love to hear from you. Perhaps you are unable to commit to meetings but would like to help out and support some of our events. We would welcome any assistance you can give us. Ngā mihi nui.

Bellevue School is now  
**ZERO WASTE**

All rubbish that comes to school in lunchboxes will now be returned home



## Contact Us

Email: [admin@bellevue.school.nz](mailto:admin@bellevue.school.nz)

Website: <https://bellevue.school.nz>

Location: [20 Princess Road, Bellevue, Tauranga 3110, New Zealand](#)

Phone: +64 7 576 5916

Facebook: <https://www.facebook.com/bellevueschooltauranga/>

## Our Website



Bellevue School

Bellevue